



SOUTH SOUND FLY FISHERS

THE GARDEN HACKLE

Volume 22 Issue 5

May 2022

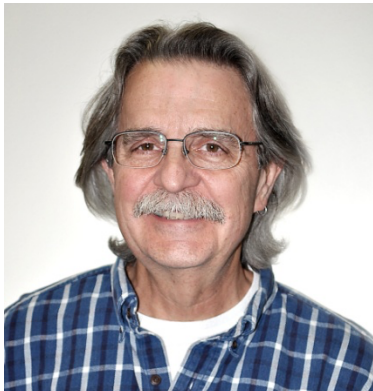
Page 3. This month's program is a presentation by WDFW Enforcement Officer Sergeant Chris Zuchlewski.

Page 5. We welcome three new members.

Page 9. Education opportunity to instruct Griffin Middle Schoolers in fly casting and fly tying.

LEADER'S LINE

President Lee Yeager



Can you believe we are already half way through spring? April reminded me more of January than spring. But the promise of warmer days and better fishing will soon be with us. April was our first in-person meeting opportunity in two years. It was exciting to see all of the members who showed up in person. With the exception of a technology connection glitch with our on line presentation everything went very well. I am confident we will get all of the technology issues resolved and make new additions to enhance and improve our meetings for everyone.

The club Board of Directors has decided to extend the time for members to pay their annual dues to the end of May. Usually the requirement to be a current member is that annual dues be paid by the end of March. That said I want to encourage everyone who has not paid yet this year to please do so. You can pay with Paypal on the club website or mail a check. If

you attend the May meeting you can pay in person. Your financial support is vital for the success of the club.

If you were not able to attend the April meeting you missed a great presentation on bass fishing in Whatcom County by Scott Willison. He shared information on a couple of great Bluegill fishing spots. If you have never fished for these small fish, give it a try. Bluegills have small mouths, so often you will feel them nibble at your fly, but once you have them hooked, they put up a fun fight. A light weight rod is recommended. This month we have Sergeant Chris Luchlewski from the WDFW law enforcement division coming to the Fire Station to speak with us about fishing and WDFW legal requirements and interactions.

In April we did not have a scheduled fishing outing. Instead Jay Paulson and Jim McAllister organized an “indoor outing” with the Oly Women on the Fly. The event featured casting help and demonstrations and fly tying exhibitions as well as great discussions on area fly fishing. Thanks to Jay, Jim, and Oly Women on the Fly. This month we will be having an outing at Summit Lake in Thurston County. See more information on the Outings page of this newsletter.

The final thought I want to leave you with is this; go fish. Whether it is alone where you enjoy the solitude and peace of nature or with friends as you enjoy the camaraderie of being with others. Everyone likes to catch fish, but if you don't there are no wasted days on the water. Be well and be kind.

Lee Yeager

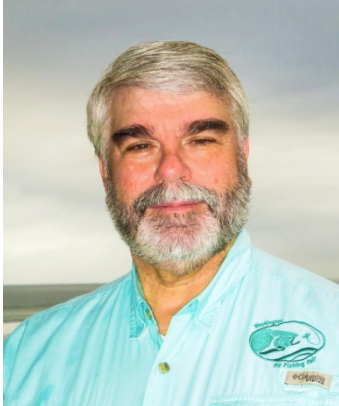


May 17, 2022
WDFW Enforcement

Our speaker for this month will be Sergeant Chris Zuchlewski with the law enforcement division of the Washington Department of Fish and Wildlife. Sergeant Zuchlewski is a veteran of the WDFW and will be sharing updates on law enforcement relating to fishing in Washington. He will also share tips for reporting violations as well as anecdotal stories of the types of encounters he and his fellow officers sometimes deal with. Should be interesting; come and join us.



Fishing a small lake in Mason County @ Howard Nanto



Treasurer's Report – 2022 Dues are Due!

Hi everyone. Thank you for continuing to support SSFF. I hope you and your families are safe and well. With the number of vaccinations finally starting to ramp up I'm optimistic that we will soon begin seeing light at the end of the dark COVID-19 tunnel. Get your second booster!

It's that time of year again. If you haven't already done so, please pay your 2022 dues as soon as possible. Dues for 2022 are \$40.00 for returning members. There are two convenient ways to pay:

1. You can make your Dues payment by Check. Please mail the check to:

Sound Fly Fishers
PO Box 2792
Olympia, WA 98507

2. You can make your Dues payment using PayPal or a debit/credit card. Please use the link below:

https://www.paypal.com/donate?hosted_button_id=NRE77ZFCKLF32



SSFF Welcomes new members-

Dan Nelson and his wife joined us. Dan is interested in dry fly fishing small streams and rivers using a 2 or 3 weight rod. Dan we need a photo of you and your wife. We want you to meet our David Brenna who shares the same passion. He really enjoys fishing the dries on our local waters close to home. Many years ago I was on a business trip to St. Paul, Minnesota. Beforehand I logged into a fly-fishing site in the area and asked where to fish. I needed fish close-by, and I did not need Guinness World Record Book fish. Best thing I could have asked for. They answered me.

My 3-weight rod was bent over with a-fish-a-cast.

Russ Cunningham is a new member! We need to catch up with Russ to get a photo. He's new to fly tying, and is interested in freshwater and coastal fishing, and conservation. He's a resident of Olympia. With your zip code, Russ, I think our meeting location shouldn't be too far away. I hope you'll attend our May meeting so we can introduce you.

Dan and Russ - don't forget our May 21 outing to Summit Lake. Let us know if you don't have your own boat / floatation so we can hopefully pair you up with other members with room in their boats! Great to have you two with us. I hope to see you at the May 17 meeting, and also the Summit Lake outing!

Tight lines!

Randy Allen

Washington State Council FFI Government Affairs

Mike Clancy, Chair



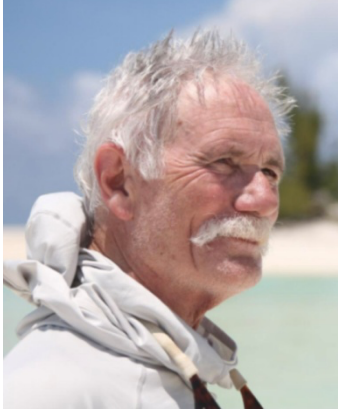
WSCFFI and The Academy

Washington State Council FFI (WSCFFI) - The council is planning a casting and fly tying event at Lake Ballinger, north of Seattle on August 13th. Come and get casting instruction and watch the fly tyers. There will be some vendors along with food trucks. Project Healing Waters and other organizations will have booths for their presentations. There's plenty of good parking. The event is free, however; there will be a charge for casting instruction with certified instructors. Hope to see you there.

Alaska There is a new proposed open pit mine in the works. The new proposed mine is called Groundhog. They have applied for an exploratory permit; no mine has been prosed yet. Hopefully, the final decision will be decided this summer on the Pebble mine.

FFI - The FFI is planning another International Virtual Expo in November 4-6, 2022. Last year's event was a very successful international event.

The Academy - We will be conducting an Academy this year if we get enough kids to participate. The deadline is May 15th this year, but we are disappointed with the enrollment so far. We will conduct an event even if we only have 8 kids. As of May 5th, we have 2 enrolled. Applications are available via SSFF website and by contacting me at mtclancy39@comcast.net or Jim Brosio @ brosio@q.com. When they complete the program, they go home ready to fly fish. We give them rods, reels, lines, flies, vests, hats, books, fly boxes, etc.



THE SOAPBOX

Greetings,

Don is currently out of town and was unable to submit his article. The following is a blog post from August 30, 2021 from the Western Rivers Conservancy website.

Yakima River Canyon

By Western Rivers Conservancy

Rare Opportunity on Washington's only Blue Ribbon Trout Stream

In the upper reaches of Washington's scenic Yakima River Canyon, Western Rivers Conservancy has embarked on an effort to conserve a four-mile stretch of the Yakima River by conserving the 812-acre Yakima Canyon Ranch. The ranch, which sits on two sides of the river on a dramatic horseshoe bend, lies at the heart of some of the best fly fishing water in the state with outstanding river access, camping, and excellent fish and wildlife habitat in every direction.

The Yakima is one of Washington's premier rivers. Named after the indigenous Yakama people, it flows 214 miles from its Keechelus Lake headwaters on the rugged eastern slope of the Cascades to the Columbia River, just south of the town of Richland. It is Washington's longest river that flows entirely within the state and its only Blue Ribbon trout stream. (This is an informal designation used to identify a river's world-class fly fishing status, indicating a river's overall health as well as its public accessibility.) Historically, the Yakima was one of the Columbia Basin's major producers of salmon and steelhead, but dams and a century of water withdrawals on the Yakima have degraded fish runs.

The stretch of the river we are working to conserve lies in the upper canyon, most of which is protected within the BLM's Yakima Canyon Area of Critical Environmental Concern (ACEC). But a handful of pivotal reaches, including the Yakima Canyon Ranch, remain unprotected. Acquiring this property and placing it into BLM ownership will add the ranch's lands to the ACEC, ensuring more uniform management of the area for the benefit of fish and wildlife. It

will protect migratory habitat for salmon and steelhead and excellent habitat for bighorn sheep, elk, mule deer, and a myriad of small mammals and birds.

The project will also improve continuity of public access along the river. The entire Yakima River Canyon, which is nestled against the Wenas Wildlife Area to the west, is a favorite destination for birders and hikers and a coveted location for fly anglers, who come from all over to fish this renowned Blue Ribbon stream. Transferring the ranch to the BLM will improve access for everyone venturing into the canyon and onto the river alike.

Our next step is to buy and hold the ranch until we can secure an appropriation from the Land and Water Conservation Fund, allowing us to convey the property to the BLM. Once that happens, this premier stretch of the Yakima will be protected forever, and public access to four more miles of the Yakima River Canyon will be guaranteed for good. Most importantly, the area's wildlife will always be able to find refuge along this special stretch of the Yakima River.

For more information here is a link to the Western Rivers Conservancy site and the above article:

<https://www.westernrivers.org/discover/blog/rare-opportunity-on-washingtons-only-blue-ribbon-trout-stream>





Community Support - Griffin School Fly Fishing Class

This is an update to the blast we sent to the club members. As of publication we desperately need bodies to help this worthy effort. We're far below our instructor goals. Thanks for reading on -

Stacey Nelson, PE instructor at Griffin Middle School, needs help teaching fly casting and fly tying. Also she will hold a day's lake outing. We need help with each activity. The school has all the rods, tying tools, and materials.

Class sizes: 7th and 8th grades each have 17 students; 6th grade has 21 students.

We need: 9 instructors each class for a ratio of 2 or 3 students per instructor.* We cannot effectively train with 10 students per instructor. We want the kids to succeed, not give up from frustration.

Picture this. In April 2.5 instructors taught 22 kids four days of tying. A student who missed the first four days showed up on day five. That student required one instructor to catch up. This reduced us to 1.5 instructors for 22 kids - that's 14 students per instructor. You could have done the math above, but now you *understand* the need for 9 instructors.

You need to: RVSP and show up with your experience - no rods, no tying tools, no fly patterns. School has all the rods, tying tool kits, and materials. You don't need to present lectures. Just work with several kids.

Dates: Daily Monday through Friday

Casting is May 12 - May 18.

Fly Tying is May 24 - June 3, maybe June 7. (Yes, there's a gap from May 19 - 23.)

Knots are June 8.

Field trip is June 9 or 10.

Class Times - Vary by day:

Monday, Tuesday, Thursday

9:49am-10:44am 7th grade (17 kids)

10:48am-11:43am 8th grade (17 kids)

2:20pm-3:15pm 6th grade (21 kids)

Wednesday

10:04am-10:44am 7th grade

10:48am-11:28am 8th grade

1:35pm-2:15pm 6th grade

Friday

9:43am-10:33am 7th grade

10:36am-11:25am 8th grade

1:48pm-2:38pm 6th grade

Address: Griffin Middle School, 6530 33rd Avenue, NW, Olympia, WA 98502
0.2 mile from US 101 off at Steamboat Island Road, West Olympia. Same exit as Topsy Whale.

Additional Info:

Instructors need not commit to a whole day. We appreciate *any* times you can give.

We're looking forward to working with these kids again. They are respectful, positive, enthusiastic about learning these new skills, and they appreciate our help.

Can you support *any* of this activity? Please contact me ASAP.

Thank you for reading this. Thank you more for participating!

Randy Allen
360 701-9662
RandyAndCarol2@gmail.com

Learning Opportunities for Club Members

Are you new to fly fishing? Many seek the SSFF to learn to fly fish or to improve their skills. New fly fishers accelerate their learning curves by joining a club and attending qualified classes.

Of course COVID-19 benched your skilled instructors. We'll post more details as we open up following guidance from the Department of Health.

SSFF offers three formal classes.

Introduction to Fly Fishing taught in spring, five weeks, once per week. After this course you'll understand what you gear you'll need like rods, reels, lines, waders and boots, floatation devices for still-water fishing. We cover locating fish in rivers, lakes, and the salt water, and discuss local fish species you'll encounter. We also study the flies you'll use in our section on entomology.

Fly Casting taught spring-early summer, seven weeks, once per week. This class is for single-handed rod casting, not spey rods. Through this course you will cast a fly line for different situations including the wind. You'll also experience how to overcome the effects of moving river water upon your line.

Introduction to Fly Tying taught in the fall - winter, six weeks, once per week. Students tie a new fly each week. As homework students tie that fly at home and bring their work to the next class. The instructor-to-student ratio ensures students receive a lot of individual attention. We teach a variety of flies useful anywhere including nymphs, streamers, and dry flies. After completing the course students' skills can be applied to other flies similar to those taught.

Please contact me with questions; my email is on the last page of the newsletter.

Tight lines!

Randy Allen



Long's Pond @ Howard Nanto

Outings

SSFF 2022 OUTINGS

- May 21 Summit Lake - Thurston Co.
Good fishing for rainbow trout and kokanee. Located off of State Hwy 8 east of Elma. DFW boat ramp on Summit Lake Shore Rd. NW
- June 25 North Fork Skokomish River - Staircase Campground
Olympic National Park
- July 23 Merrill Lake -Cowlitz Co.
This is a fly fishing catch and release only lake.
- Aug 20 Oakland Bay - Mason Co.
Saltwater fishing for cutthroat trout. Shoreline access if you do not have a floatation device.
- Sept 24 Deschutes River - Thurston Co.
A wild river that has rainbow and cutthroat, the fish are not stocked. We will determine which section of the river we will fish in September.
- Oct 22 Cold Water Lake - Skamania Co.
Fishing for wild rainbows and cutthroat trout. Limited shoreline fishing, floatation devices are preferred. Select gear rules in effect.
- Nov 19 Lake St.Clair - Lacey
An urban lake located in Lacey off Yelm Highway. The boat ramp is on Rehkla Rd SE. The lake has good shoreline access.

May Outing - Summit Lake

Our club outing for May will be at Summit Lake in Thurston County. Summit Lake is popular fishing lake that features a variety of fish; Kokanee, Rainbow trout, Cutthroat trout, largemouth and smallmouth bass. The lake has a nice boat ramp and does have available fishing from the shoreline on both sides of the boat ramp. Summit Lake is located west of Olympia on WA state highway 8. Look for the Summit Lake Road NW exit to the right. Turn right on Summit Lake Shore Road NW to the boat launch. We will gather at the boat launch at 9:00 on May 21.

Club member Jim McAllister is veteran fisher of Summit Lake and he will speak about the outing and be available to answer questions at the club meeting on May 17.

Recap of April's "Indoor-Outing"

You could say that the April outing of the South Sound Fly Fishers was a whale of a time. Two SSFF club members, Jim McAllister and Jay Paulson, organized an indoor outing at the Topsy Whale taproom. This event was a collaboration with the Oly Women on the Fly group. The event featured casting demonstrations and teaching conducted by the Oly Women. Inside the Topsy Whale Jay, Jim, and some other club members demonstrated tying different patterns. It was a great afternoon with sunshine, vices, and fly rods. A good crowd was interested in learning more about casting techniques and fly fishing in general.



Photos courtesy of Mike Clancy

Greetings Fly Fishers:

Here is a book on fishing for one of the most iconic fish in Puget Sound:

“FLY FISHING FOR SEARUN CUTTHROAT IN SOUTH PUGET SOUND”

Mel Hurd, past President and a longtime member of SSFF, is the author of this incredible booklet. Mel originally wrote the booklet in 1993 and revised it in 2006. The 20 page booklet is one of the most informative references for the South Sound area with locations, tactics, etc. This booklet comes highly recommended by many members of our club who have had success by following Mel’s tips.

It is a wonderful booklet, referencing everything you can think of regarding “FLY FISHING FOR SEARUN CUTTHROAT IN SOUTH PUGET SOUND.” It’s very informative and an easy read. Fishing the salt is great in our area, and there are references to areas for easy access for fishing for searuns, plus recommendations on equipment and fishing techniques.

With Mel’s permission SSFF is offering his booklet to interested members and non-members. We are asking for a minimum donation of \$10 which includes shipping via U.S. Mail (U.S. addresses only). All proceeds go into our Conservation donation fund. Some members have donated more than the minimum. For your extra donations *we thank you!*

Either send a check to Jim Maus Treasurer SSFF PO Box 2792, Olympia WA 98507 or use PayPal/credit card/debit card:

https://www.paypal.com/donate?hosted_button_id=GYWE6RQWY2CF4

As soon as Jim receives your donation he will notify me with your address, and I will get the booklet to you.

If you pay electronically, you will receive your booklet sooner than sending your check to the PO Box.

Part four of this series will discuss midges. Stoneflies are from the order Plecoptera, whose name comes from its ability to fold its wings horizontally.

Compared to the caddisflies, mayflies, and midges, which include hundreds of different insect species, stoneflies (are a relatively small order of insects. But because they are relatively large as individuals, and populate clean, cold, fast-flowing and sometimes infertile streams, they are important to trout.

Stoneflies range in size from #4 to #18. The adults have four shiny long wings, which lie flat over the back when at rest. The life cycle is egg, nymph, adult. Similar to mayflies, there is no larva or pupa stage.

Stonefly nymphs live in fast-flowing water and as a result have flat bodies with strong legs (N=6) for clinging to rocks. They have two stubby tails, long antennae, and, unlike mayfly nymphs, they have no gills on the abdomen, they are on the thorax.

When the nymphs mature, they crawl to shore and emerge, therefore the "emergence" phase is not as important to fly fishers as it is with some other aquatic insects. However, in the period the nymphs are migrating toward shore, they are often washed into the current and trout gather in the shallows to feed on them. Check under streamside rocks to match your fly to the most prevalent nymphs.

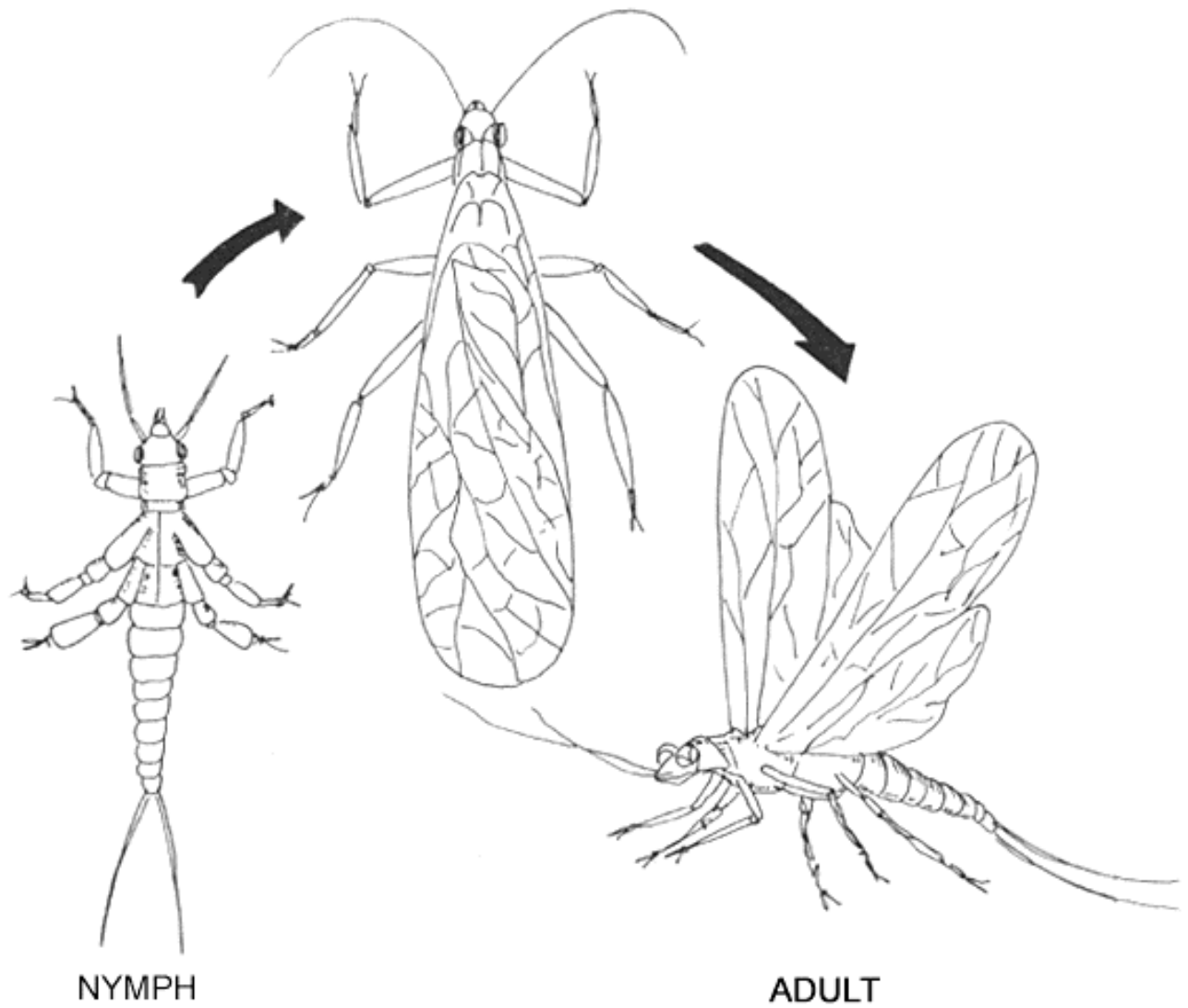
Stonefly adults look similar to the nymph, except they have 2 pairs of wings that are heavily veined and lay flat over the back when at rest. They can live for days or weeks in streamside vegetation and are poor fliers. Oftentimes, they fall or are blown into the water. Mating occurs on land and afterwards, the egg-laying females drag their abdomens on the water's surface to release their eggs.

Salmonflies are the largest and most well-known member of the stonefly family. For nymphs, use black Kaufmann's Stones, or Yuk Bugs (#4-8). For adults, use orange Stimulators, Barry's Hedge Hog, or the Rogue Foam Stone (#4-8).

Golden Stones are slightly smaller and lighter colored with yellow or tan highlights and a mottled brown body. Use Mercer's Poxback Golden Stone (#6-10) for the nymph and yellow or orange Stimulators (#6-10) for the adults.

Other locally important stoneflies include Skwalas (#8-12), Little Black Stones (#12-14), and Yellow Sallies (#12-16).

LIFE CYCLE OF THE STONEFLY



Disclaimer: The majority of this information was taken from an online article on flyfisherman.com, January 12, 2016.



Storm Cloud © Howard Nanto



SOUTH SOUND FLY FISHERS – 2022 Officers, Directors, Chairs

President: Lee Yeager, yeagerflyfish@gmail.com
Vice President: Randy Allen, randyandcarol2@gmail.com
Secretary: Jeff Miller, jmill2003@gmail.com
Treasurer: Jim Maus, jimmaus@comcast.net
Director at Large: Todd Parker, tparker2356@gmail.com
Director at Large: Kevin Angevine, grcaulder777@gmail.com
Past President: Randy Allen, randyandcarol2@gmail.com
Conservation: Don Freeman, donfreeman74@gmail.com
Education: Randy Allen, randyandcarol2@gmail.com
Fundraising: Vacant
Membership: Randy Allen, randyandcarol2@gmail.com
Outings Chair: the Board of Directors
Programs: Lee Yeager, yeagerflyfish@gmail.com
Webmaster/Facebook: Vic Andrade, hp8202va@gmail.com
Newsletter Editor: Bruce Baker, bmbaker09@hotmail.com
FFI/Gov't: Mike Clancy, mtclancy39@comcast.net

Board of Directors Zoom meetings are held the first Tuesday of every month starting at 7:00 pm.

Club Meetings are conducted by Zoom and in-person at 7:00pm the third Tuesday of every month except August and December. Zoom is open at 6:30 if you want to visit and talk fly fishing. In-person meetings are held at the Griffin Fire Station (3707 Steamboat Loop NW, Olympia, WA 98502).

Directions:

From the north - Exit US 101 South to Steamboat Island Rd. Turn left over US 101 go 0.4 miles to Steamboat Island Loop - the fire station is on the left.

From the south - Take US 101 north from I-5. Follow signs for US 101 North to Shelton and Port Angeles. In the right hand lane, go 1.3 miles to the Steamboat Island Rd exit. The exit is a sharp right curve, it will T into Sexton Drive. Turn left; go past the Chevron Island Market on *your right*. You will come to a stop sign at Steamboat Island Rd. Turn right; the fire station on Steamboat Island Loop will be 0.3 of a mile on the left.

If you get lost or can't find the station call Lee at 903-421-4984 or Randy at 360-701-9662.

The meeting announcement and meeting Zoom code are sent to members and friends about a day ahead of the meeting by email. Website: southsoundflyfishers.com
USPS Mail Address: SSFF, PO BOX 2792, Olympia WA 98507

SSFF Garden Hackle Newsletter
© May 2022